

**SCBA UNIVERSAL BRACKET KIT
MODEL SCBAUWB****PRODUCT DESCRIPTION**

Universal bracket kit for replacement into an existing SCBA wall cabinet or on a wall for proper fit of most SCBA equipment.

COMPONENT PARTS LIST – See Page 2

- 2 – 16" lg. Horizontal Channel (Item #1)
- 2 – 24" lg. Vertical Channel (Item #2)
- 2 – Spring Arms (Item #3)
- 1 – Lower Mounting Bracket (Item #4)
- 1 – Hardware Package

NOTE: The directions and the enclosed hardware package are designed for mounting the bracket in a wall cabinet type container or on a wall. If mounting to a wall, the four (4) ¼"-20 x 1¼" round head screws, washers, and lock nuts might require replacement with appropriate hardware.

INSTALLATION INSTRUCTIONS**CAUTION: CHECK FOR ADEQUATE WALL SUPPORT.**

- 1) Determine the location for the mounting bracket assembly on a wall or inside a wall cabinet. The assembly will require an unobstructed area 16" wide by 24" high. If it is to be wall mounted ensure proper support is found in the wall. (A support plate may be required).
- 2) Find the center of the mounting area. Measure 8" from the center in both directions (right and left) and mark that distance. The two parallel vertical lines should be 16" apart. From the center location, measure 12" in both directions, up and down, and mark that distance. These two parallel horizontal lines should be 24" apart.
- 3) Locate the two 24" vertical channels (**Item #2**). Position the vertical channels with the open groove in the channel facing forward and the larger hole towards the bottom. Place the outside edge of the channels on the vertical markings. Mark and drill the mounting holes for the vertical channels.
- 4) At the lower screw openings, fasten the vertical channels to mounting area using two (2) ¼"-20 x 1¼" long round head screws, two (2) ¼" x 11/16" flat washers, and two (2) ¼"-20 lock nuts for each channel. The channels must be parallel to each other. **Do not tighten the hardware at this time.** At the top of the vertical channels, slide two (2) 3/8"-16 x 1¼" carriage bolts into each channel, as shown in **Figure 1-B**. Carriage bolt may have to be rotated slightly to fit into vertical channel.
- 5) Locate the two 16" horizontal channels (**Item #1**). One channel will be the upper support assembly that will hold the two (2) spring arms (**Item #3**). The other channel will be the lower support that will hold the lower mounting bracket (**Item #4**).
- 6) Slide two (2) 3/8"-16 x 3/4" carriage bolts into the lower support channel, as shown in **Figure 1-B**. Carriage bolt may have to be rotated slightly to fit into lower support channel. Attach the lower mounting bracket (**Item #4**) on the carriage bolts with the flat side towards the channel and secure using two (2) 3/8" serrated washers and two (2) 3/8"-16 lock nuts. See **Figure 1-C**. **Do not tighten the hardware at this time.**
- 7) Place two (2) ½" x 7/8" flat washers onto the two (2) carriage bolts protruding from the vertical channels. Position the lower support channel with the mounting bracket onto the carriage bolts and secure using two (2) 3/8" serrated washers and two (2) 3/8"-16 lock nuts. **Do not tighten the hardware at this time.**
- 8) Insert the two (2) ¼"-20 x 3/8" slotted set screws through the spring arms and slide into the upper support channel, as shown in **Figure 1-A**. **Do not tighten the set screws at this time.**
- 9) At the top of the vertical channels, slide two (2) 3/8"-16 x 1¼" carriage bolts into each channel, as shown in **Figure 1-B**. Carriage bolt may have to be rotated slightly to fit into vertical channel. Place two (2) ½" x 7/8" flat washers onto the two (2) carriage bolts protruding from the vertical channels. Position the upper support channel with the spring arms onto the carriage bolts and secure using two (2) 3/8" serrated washers and two (2) 3/8"-16 lock nuts. **Do not tighten the hardware at this time.**
- 10) At the upper screw opening, fasten the vertical channels to mounting area case using two (2) ¼"-20 x 1¼" long round head screw, two (2) ¼" x 11/16" flat washers, and two (2) ¼"-20 lock nuts for each channel. Ensure vertical channels are parallel to each other.
- 11) **Secure vertical channels to mounting area by tightening all four (4) ¼"-20 x 1¼" round head screws, washers and lock nuts.**
- 12) Adjust the upper support channel (and the width of the spring arms) and lower support channel (with the lower mounting bracket) to properly support the breathing apparatus. The adjustment process may have to be repeated to ensure proper fitting of the bracket to the breathing apparatus tank. **Tighten all hardware at this time.** See **Figure 2** for a complete assembly view.
- 13) On a properly fitted bracket assembly, the breathing apparatus should be secure in the bracket, but should release freely when needed.

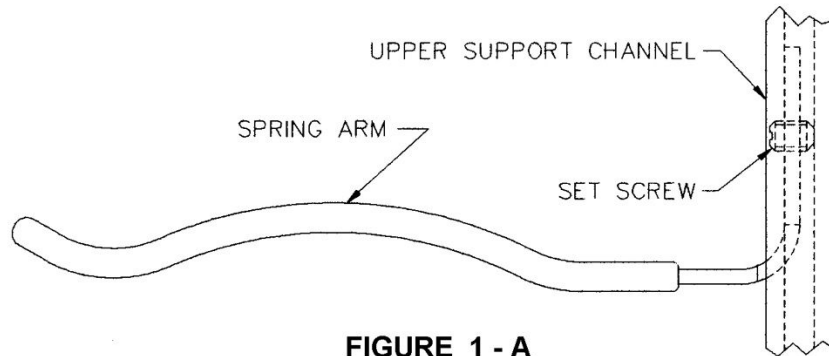
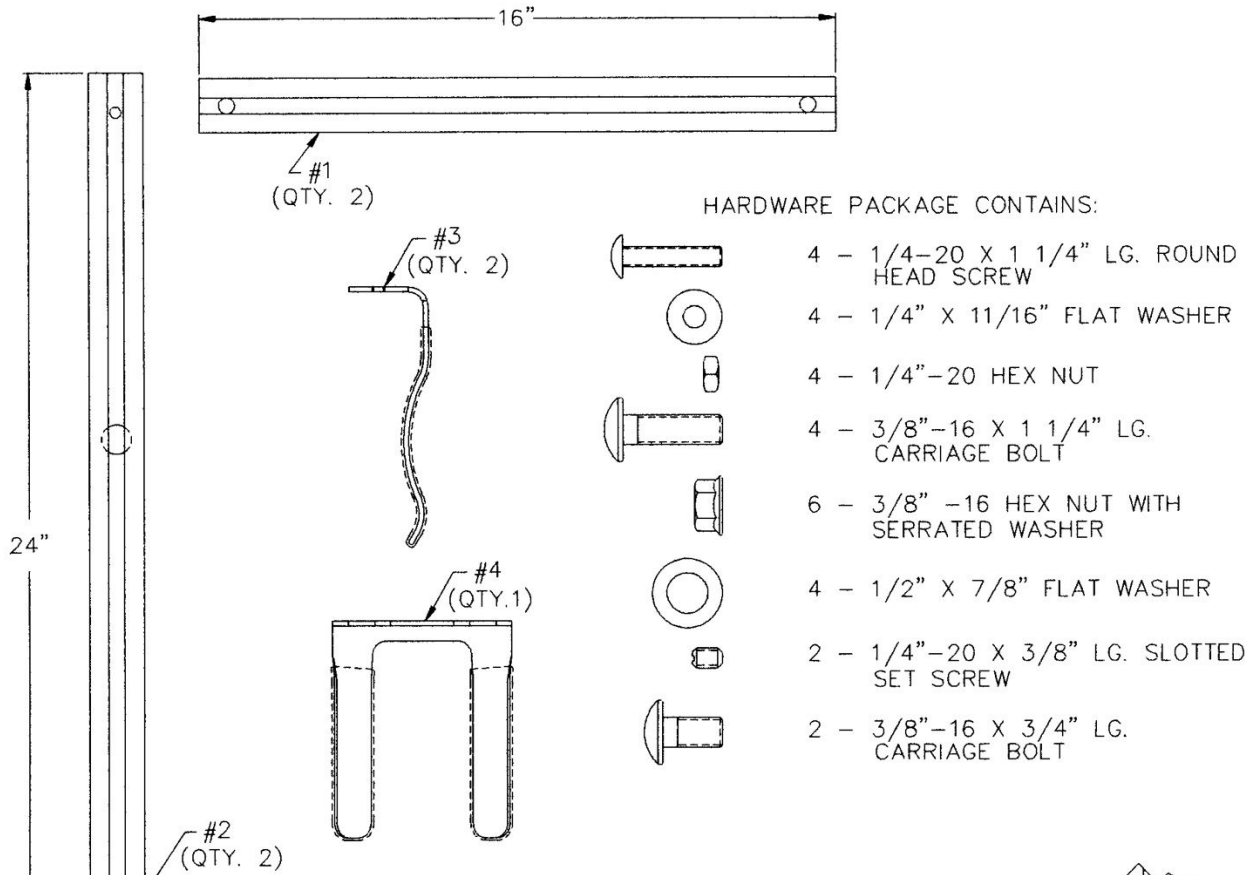


FIGURE 1 - A

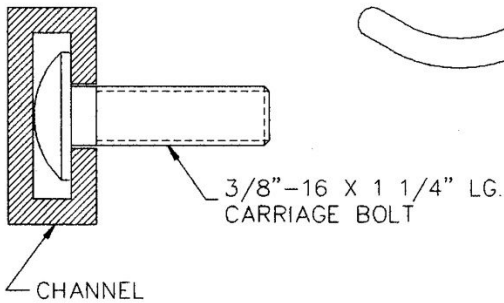


FIGURE 1 - B

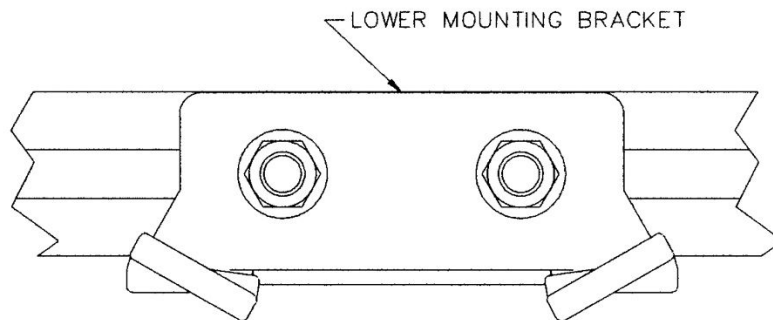
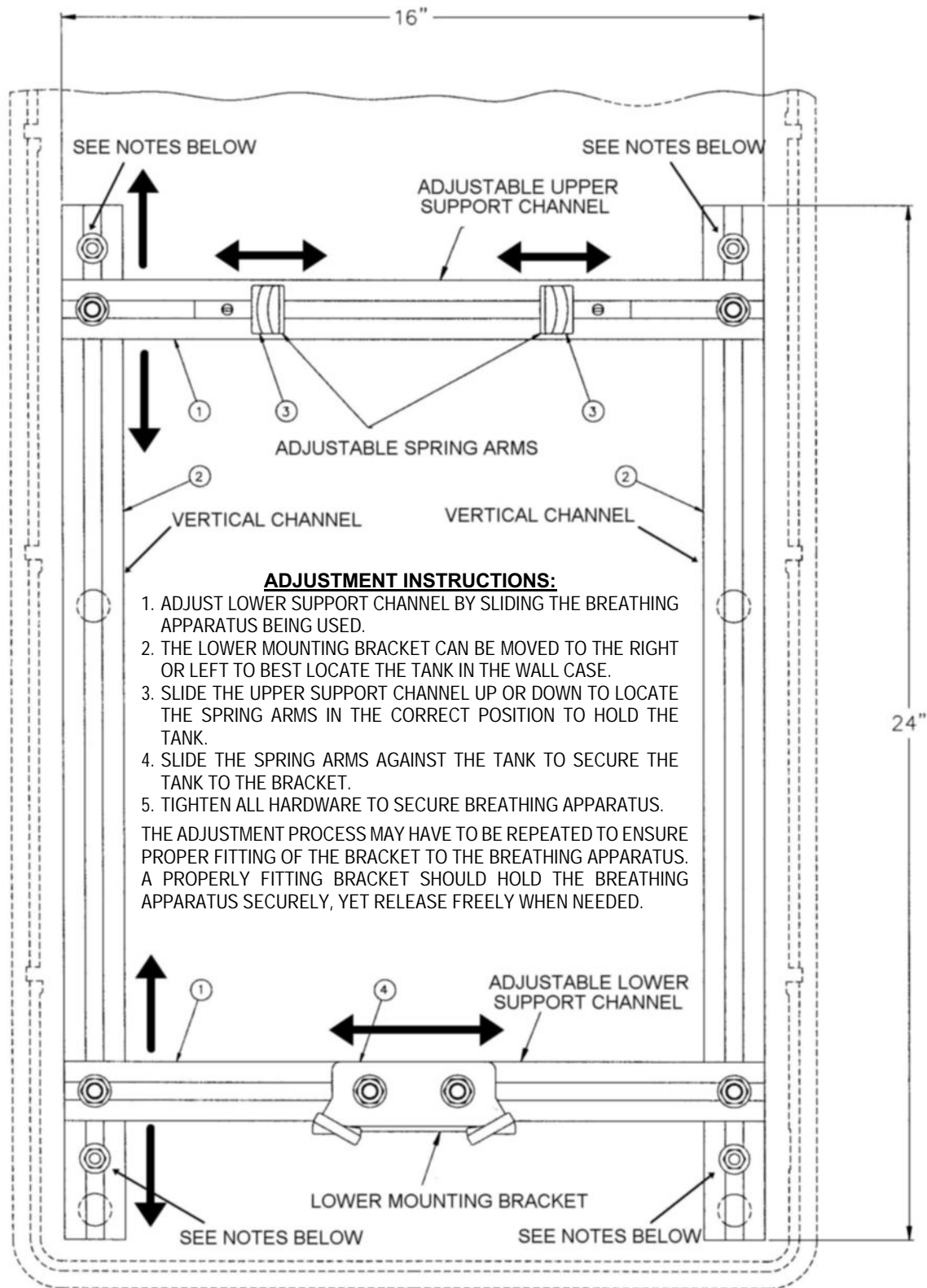


FIGURE 1 - C



NOTES:

1. Surface mounting location shown.
2. If fastening to a mounting surface, use the hardware provided in kit or other appropriate hardware (supplied by others).
3. Suitable anchorage is required for weight of apparatus.

FIGURE 2 COMPLETE ASSEMBLY VIEW

PROPOSITION 65

WARNING: This product can expose you to BPA, which is known to the State of California to cause birth defects or other reproductive harm. For more information go to www.P65Warnings.ca.gov.

WARRANTY STATEMENT

ENCON HEREBY DISCLAIMS ALL WARRANTIES EXPRESSED OR IMPLIED INCLUDING BUT NOT LIMITED TO WARRANTIES OF MERCHANTABILITY, FITNESS FOR A PARTICULAR PURPOSE, AND NON-INFRINGEMENT OF THIRD-PARTY RIGHTS, EXCEPT AS HEREINAFTER PROVIDED.

Encon Safety Products warrants that for one year from the date of purchase of any Encon products, the product will be free of defects in materials and workmanship if properly used and cared for or cleaned under normal conditions in accordance with Encon's use and care instructions and properly installed, if applicable, in accordance with Encon's installation instructions. With respect to the product, Encon's only obligation and purchaser's exclusive remedy under this warranty is to repair or replace such product; provided that:

1. Encon is notified of the defect within one year of shipment, and
2. the product is determined by Encon to be defective.

Encon requires proof of original ownership as proof of warranty coverage, and Encon must receive any claim under this Limited Warranty within one year of purchase of the product.

NOTWITHSTANDING ANYTHING TO THE CONTRARY CONTAINED HEREIN, ENCON SHALL NOT BE LIABLE FOR LOSS, DAMAGE, OR EXPENSE ARISING DIRECTLY OR INDIRECTLY AS A CONSEQUENCE OF USE OF THE EQUIPMENT WITH OTHER PRODUCTS OR FROM ANY OTHER CAUSE, INCLUDING ANY CONSEQUENTIAL, INCIDENTAL, SPECIAL OR EXEMPLARY DAMAGES, EXCEPT FOR ENCON'S OBLIGATION TO REPAIR OR REPLACE DEFECTIVE PRODUCTS AS EXPRESSLY PROVIDED IN THIS STATEMENT.

Replacement parts purchased from Encon are warranted for one year following the shipment of such replacement part, or until the expiration of the warranty period for the product, whichever is less. No warranty is given in connection with products that are altered without Encon's expressed written consent. The same warranty limitations and the obligations of Encon as set out herein above shall apply to replacement parts.

Encon's total liability arising out of this warranty (including, but not limited to, warranty claims) regardless of forum and regardless of whether such action or claim is based on tort, contract or otherwise will not exceed the total purchase price of the product.



6825 W. Sam Houston Pkwy. N
Houston, TX 77041
1-800-AT-ENCON / 1-800-283-6266
customerservice@enconsafety.com
<http://www.enconsafety.com>